

**DEPARTMENT A  
ANTIQUES & COLLECTIBLES**

**SUPERINTENDENT: GARY SCHORZMAN**

**Premiums:** 1st - \$2.00, 2nd.-. \$1.50, 3rd - \$1.00, Rosettes – No extra Money

**ENTRY:** Monday, July 29, 9 AM to 6 PM **ONLY**

**JUDGING:** Tuesday, July 30, 9:00 A.M. till finished

**RULES:**

1. **New Rule**—Only 24 Entries Per Individual Will Be Allowed. No One May Bring Entries In Another Person's Name.
2. **New Rule**—Please Pre-Register At The Fair Office Anytime During the Month of July. We Will Take Entries On Monday Of Fair But There WILL BE A LINE. Please Have Your Paper Work Completed.
3. **New Rule**—You Must Have Duplicate Tags: One Tag On The Item For Check-In, A Matching Tag For Check-Out. (Check-Out Sunday 9:30 AM To 2:00 PM And Monday From 1:00 To 4:00) Checks Available At 10 AM In Office.
4. Antiques must be 50 years old or older. All exhibits are judged according to age, condition, original appearance and form. All judge's decisions are final!
5. Exhibits must be entered in the appropriate division. Look at the item, look at the Division and class number and enter appropriately. Items not listed may fit in "other class".
6. All items exhibited must be washed, dusted and as clean as possible or they will not be admitted. Judges will not look at dirty items. Tape all lids on for safety.
7. Jewelry and other small items must be mounted on cardboard. ( or in baggies, size appropriate)
8. No one is to remove any exhibit without ownership or written authorization. No one is to remove any exhibit without authorization of the superintendent.
9. Clothing, linens, etc., entered without plastic covering are left at exhibitor's risk.
10. Only the Antique Superintendent and staff are to be in the Antique building on entry day, judging day and check out day. This is for the safety of the exhibits.
11. Exhibits are required to stay through the fair to check out time.
12. Attendants are on duty in the Antique Building at all times during the Fair to keep items safe. However, exhibit your items at your own risk. The Minidoka County Fair Board will not be held liable in case of loss of any kind.
13. For each Division ribbons awarded: blue (1st), red (2nd) and white (3rd) ribbon. A Best of Division Rosette will be given in each division. One Best of Show and One Judge's Choice (per judge). The Rosettes do not pay extra money.
14. For safety purposes - Post cards, books, documents and unframed pictures **MUST** be secured to a piece of cardboard or placed inside a plastic bag. For old documents/pictures, use archival safe plastics.

## BOOKS AND CARDS DIVISION ONE

Place in archival safe containers

### **CLASS NO.**

- |                     |                    |  |
|---------------------|--------------------|--|
| 1. School Book      | 11. Prayer Book    | 21. Document or Deed                     |
| 2. Music Book       | 12. Magazine       | 22. Album                                |
| 3. Children's Book  | 13. Comic Book     | 23. Most Unusual Book, Card, Etc.        |
| 4. Cook Book        | 14. Newspaper      | 24. Other Collectible (Book, Card, etc.) |
| 5. Medical Book     | 15. Calendar       | 25. Scrapbooks                           |
| 6. Educational Book | 16. Christmas Card | 26. How to Books                         |
| 7. Poetry Book      | 17. Valentine Card | 27. Certificate(s)                       |
| 8. Bible            | 18. Greeting Card  | 28. Scouting Items                       |
| 9. Hymnal           | 19. Post Card      |  |
| 10. Sheet Music     | 20. Paper Doll     |  |

## PHOTOS, PRINTS, PAINTINGS, & FRAMES DIVISION TWO

Place in Archival safe containers

### **CLASS NO.**

- |  |  |
|--|--|
| 1. Small Photo of 1-3 people, color            | 14. Small Print Misc.                                |
| 2. Small Photo of 1-3 people, color with frame | 15. Medium Print Misc.                               |
| 3. Small Photo of 1-3 people, B&W              | 16. Large Print Misc.                                |
| 4. Small Photo of 1-3 People, B&W with frame   | 17. Small Painting                                   |
| 5. Medium group 3-10, color                    | 18. Medium Painting                                  |
| 6. Medium group 3-10, color with frame         | 19. Large Painting                                   |
| 7. Medium group 3-10, B&W                      | 20. Small Frame                                      |
| 8. Medium group 3-10, B&W with frame           | 21. Medium Frame                                     |
| 9. Large group 10 or more, color               | 22. Large Frame                                      |
| 10. Large group 10 or more, color with frame   | 23. Military Photo                                   |
| 11. Large group 10 or more, B&W                | 24. Most Unusual Painting, Photo, or Frame           |
| 12. Large group 10 or more, B&W with frame     | 25. Other Collectible (Photo, Print, Painting, Etc.) |
| 13. Tintype                                    | 26. RUPERT Advertising Item                          |

## ANTIQUUE CLOTHING, QUILTS, LINENS, ETC. DIVISION THREE

### CLASS NO.

- |                        |                                 |
|------------------------|---------------------------------|
| 1. Baby Clothes        | 13. Handmade Samplers           |
| 2. Children's Clothes  | 14. Table Cloth                 |
| 3. Women's Clothes     | 15. Bedspread                   |
| 4. Men's Clothes       | 16. Linens                      |
| 5. Wedding Dress       | 17. Doily                       |
| 6. Hats (2 entries)    | 18. Dresser Runner              |
| 7. Shoes               | 19. Handkerchiefs (2 entries)   |
| 8. Gloves              | 20. Pillows (2 entries)         |
| 9. Purses (2 entries)  | 21. Handwork (2 entries)        |
| 10. Quilts (2 entries) | 22. Tapestries                  |
| 11. Hat or Glove Box   | 23. Most Unusual (Class C)      |
| 12. Umbrellas or Canes | 24. Other Collectible (Class C) |
|                        | 25. Military Uniforms           |

## JEWELRY, SILVERWARE, ETC. DIVISION FOUR

Please display on cardboard, baggies, or boxes

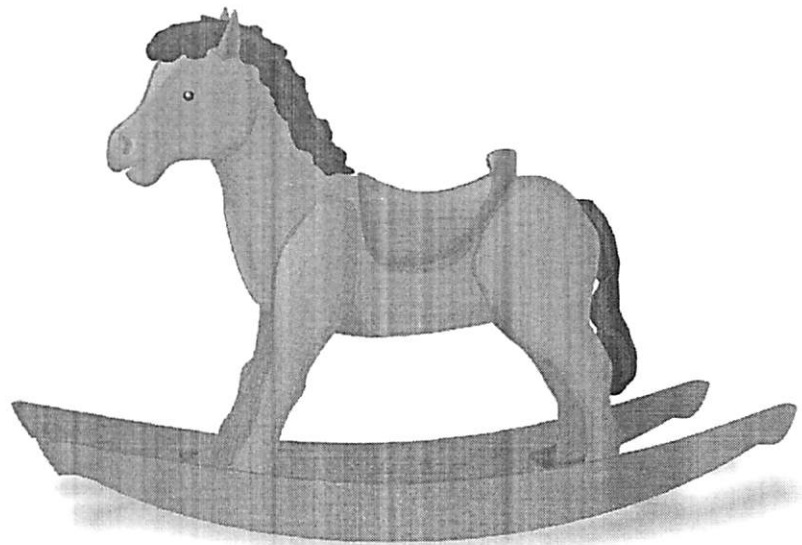
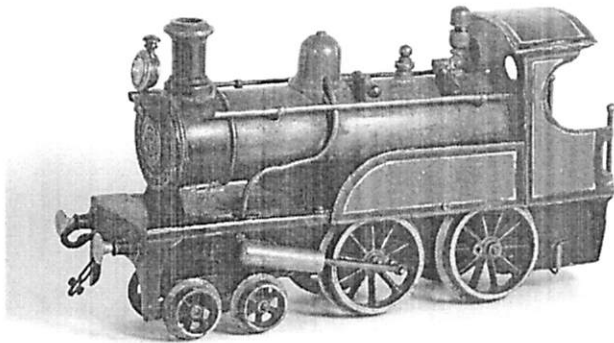
### CLASS NO

- |                             |                            |
|-----------------------------|----------------------------|
| 1. Broach                   | 17. Multiple Silver Pieces |
| 2. Necklace                 | 18. Figurines or Statues   |
| 3. Cufflinks                | 19. Medals                 |
| 4. Ring                     | 20. Individual Stamps      |
| 5. Pocket Watch             | 21. Stamp Collection       |
| 6. Watch Fob                | 22. Individual Coins       |
| 7. Wrist Watch              | 23. Coin Collection        |
| 8. Misc. Gold Jewelry       | 24. Currency               |
| 9. Misc. Silver Jewelry     | 25. Foreign Currency       |
| 10. Jewelry & Music Boxes   | 26. Costume Jewelry        |
| 11. Sterling Items          | 27. Compacts               |
| 12. Chalk Items             | 28. Pocket Knives          |
| 13. Knife Rest              | 29. Pewter Items           |
| 14. Silver plate Items      | 30. Most Unusual           |
| 15. Gold Items              | 31. Other Jewelry/Silver   |
| 16. Individual Silver Piece |                            |

## TOYS AND DOLLS DIVISION FIVE

### CLASS NO

1. Metal Toys
2. Cast Iron Toy
3. Wooden Toy
4. Rubber Toy
5. Child's Game
6. Child's Bank
7. Toy Dishes
8. Toy Silverware
9. Stuffed Animals
10. Child's Wagon
11. Bisque Doll
12. China Doll
13. Composition Doll
14. Porcelain Doll
15. Plastic Doll
16. Cloth Doll
17. Rubber Doll
18. Doll Buggy
19. Toy Furniture
20. Most Unusual
21. Marbles
22. Other Toy
23. Other Doll
24. Other Stuffed Animal
25. Child's Kitchen Tool
26. Toy Buildings

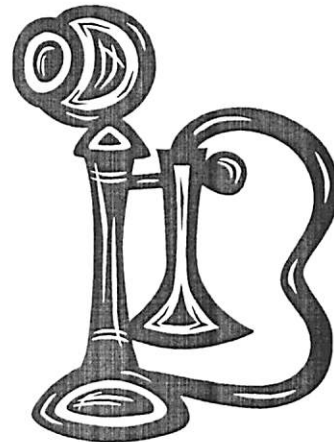


## YESTERDAY'S ITEMS DIVISION SIX

### Things From All Over The House

#### CLASS NO.

1. Buttons
2. Buttons Hooks
3. Button Collection
4. Curling Irons
5. Eye Glasses
6. Hair Items
7. Manicure Items
8. Vanity Sets
9. Hat pins
10. Hat Pin Holder
11. Powder Jars
12. Perfume Bottles
13. Shaving Items
14. Spittoons
15. Smoking articles
16. Hand Mirrors
17. Chamber Pots
18. Medicine Cabinets
19. Pitcher & Bowls
20. Political Item
21. Holiday Item
22. Hospital Item
23. Medical Item
24. Oriental Item
25. Salesman Samples (small)
26. Salesman Samples (large)
27. Doll House Furniture
28. Advertising Box
29. Door Stopper
30. Stereoscope & Cards
31. Sewing Baskets
32. Sewing Items
33. Medicine Bottles
34. Baby Bottles
35. Milk Bottles
36. Pop Bottles
37. Liquor Bottles
38. Food Bottles
39. Colored Bottles
40. Insulators
41. Candy Containers or Molds
42. Collector's Plates
43. Steins
44. Ink Pens
45. Chalkboards
46. Desk Sets
47. Stationery Items
48. Office Machines
49. Match Holders
50. Most Unusual Collectible
51. Other Collectible (can't fit above categories)
52. Ink Bottle
53. Coleman Lanterns
54. Binoculars
55. Microscope



## KITCHEN COLLECTABLES DIVISION SEVEN

### CLASS NO.

- |                             |  |
|-----------------------------|--|
| 1. Kitchen Scales           | 20. Measuring Cups & Spoons                              |
| 2. Butter Items             | 21. Baking Items   |
| 3. Irons & Trivets          | 22. Mixing Bowls   |
| 4. Coffee Grinders          | 23. Cooking Pans   |
| 5. Tea Kettles              | 24. Kitchen Appliances                                   |
| 6. Coffee Pots              | 25. Copper Kitchen Item                                  |
| 7. Cookie Jars              | 26. Wooden Kitchen Item                                  |
| 8. Cracker Jars             | 27. Misc. Kitchen Tool                                   |
| 9. Egg Boxes/Carton, etc.   | 28. Child's Kitchen Tool                                 |
| 10. Rolling Pins            | 29. Granite Ware, Any Color                              |
| 11. Kraut Cutters           | 30. Crocks & Jugs  |
| 12. Laundry Items           | 31. Food Containers                                      |
| 13. Toothpick/Match Holders | 32. Fruit Jars, Any Color                                |
| 14. Pitchers                | 33. Milk Bottles   |
| 15. Spooners                | 34. Soda Fountain Items                                  |
| 16. Salt & Peppers          | 35. Creamers/Sugar Bowls                                 |
| 17. Salt Dishes             | 36. Other Kitchen Collectible<br>(can't fit other class) |
| 18. Cruet Sets              | 37. Most Unusual Kitchen Collectible                     |
| 19. Jam or Pickle Jars      |  |

## GLASSWARE DIVISION EIGHT

### CLASS NO.

- |                                   |  |
|-----------------------------------|--|
| 1. Pressed or Etched Glass        | 20. Earthenware                                  |
| 2. Cut Glass, All Colors          | 21. Vases, All Colors                            |
| 3. Colored Glass                  | 22. Lusterware                                   |
| 4. Other Colored Glass            | 23. Most Unusual Glassware                       |
| 5. Carnival Glass                 | 24. Other Glassware (can't fit above categories) |
| 6. Glassware, Clear               | 25. Elegant Glassware                            |
| 7. Kid's Glassware, Any Color     | 26. Flow Blue                                    |
| 8. China, or Porcelain            | 27. Vaseline                                     |
| 9. Other China                    | 28. Cranberry                                    |
| 10. Pottery                       | 29. Ruby   |
| 11. Other Pottery                 | 30. Amethyst                                     |
| 12. Hand Painted Glass            | 31. Cobalt                                       |
| 13. Ironstone, All Colors         | 32. Nippon                                       |
| 14. Oriental, Occupied Japan      | 33. R.S. Prussia                                 |
| 15. Amber/Yellow Depression       | 34. Germany                                      |
| 16. Blue Depression               | 35. Roseville                                    |
| 17. Green Depression              | 36. Weller                                       |
| 18. Pink Depression               | 37. McCoy  |
| 19. Depression, Other than colors | 38. Hull   |

Continued on next page

39. Royal Copley
40. Blue Willow
41. Limoge
42. Figurines
43. Japan

44. Fenton
45. Fostoria
46. Custard Glass
47. Fiesta Pitcher
48. 1950's Viking
49. Moon & Stars

## FURNITURE, CLOCKS, LAMPS, ETC. DIVISION NINE

### CLASS NO.

- |                             |   |
|-----------------------------|---|
| 1. Small piece of furniture | 11. Radio   |
| 2. Large piece of furniture | 12. Phonograph                                    |
| 3. Wicker Items             | 13. Camera  |
| 4. Trunks                   | 14. Musical Instruments                           |
| 5. Spinning Wheels          | 15. Clocks, All Kinds                             |
| 6. Suitcases                | 16. Kerosene Glass Lamps                          |
| 7. Child/Baby Furniture     | 17. Electric Lamp                                 |
| 8. Mirrors                  | 18. Most unusual                                  |
| 9. Windows or Doors         | 19. Other Collectible (can't fit any class above) |
| 10. Telephone               | 20. Sewing Machines                               |
|                             | 21. Phonograph record                             |

## PRIMITIVES DIVISION TEN

### CLASS NO.

- |                         |                                   |
|-------------------------|-----------------------------------|
| 1. Farm Items           | 14. Trapping Items                |
| 2. Mining Items         | 15. Fishing Items                 |
| 3. Carpenter Items      | 16. Guns & Accessories            |
| 4. Automotive Items     | 17. Military Items                |
| 5. Wagons & Accessories | 18. Padlocks                      |
| 6. Nautical Items       | 19. Keys                          |
| 7. Railroad Items       | 20. Metal Lanterns                |
| 8. Artifacts            | 21. Leather Items                 |
| 9. Indian Items         | 22. Cobbler Items                 |
| 10. Tack                | 23. Dairy Items                   |
| 11. Spurs               | 24. Cast Iron Items               |
| 12. Bells               | 25. Tools                         |
| 13. Scales              | 26. Other (can't fit class above) |
|                         | 27. License Plates                |
|                         | 28. Camp Stoves (Coleman, etc.)   |

## COLLECTIONS DIVISION ELEVEN

### THIS IS FOR THE TRUE ANTIQUE COLLECTOR!

MINIMUM of six (6) items, MAXIMUM of twelve (12) items.

*Examples: Buttons, Hats, Salt/Peppers, Coins, Bells, Jewelry.*

*If your collection is made up of small items (for instance buttons). Display on poster board, in a box or something to keep the items together.*

#### CLASS NO.

- |                    |                             |
|--------------------|-----------------------------|
| 1. Buttons         | 15. Bottles                 |
| 2. Hats            | 16. Cups & Saucers          |
| 3. Salt & Peppers  | 17. Kitchen Tools           |
| 4. Money, Coins    | 18. Cookie Jars             |
| 5. Bells           | 19. Glass Ware              |
| 6. Jewelry         | 20. Stamps                  |
| 7. Tools           | 21. Dolls                   |
| 8. Toys            | 22. Match Books             |
| 9. Hat Pins        | 23. Other                   |
| 10. Greeting Cards | 24. Most Unusual Collection |
| 11. Books          | 25. Canning Jars            |
| 12. Artifacts      | 26. Post Cards              |
| 13. Keys           | 27. Photos                  |
| 14. Sewing Items   |                             |

## ADVERTISING ITEMS DIVISION TWELVE

*If you have any advertising item, other than those listed below, please bring them and we can add classes for the category!!*

#### CLASS NO.

- |                          |  |
|--------------------------|--|
| 1. Paper Sign            | 6. Paper Item                          |
| 2. Metal Sign            | 7. Metal Item                          |
| 3. Wood Sign             | 8. Most Unusual Advertising Item       |
| 4. Box, Can or Container | 9. Rupert Advertising Item             |
| 5. Glass Item            | 10. Other Item not listed above        |
|                          | 11. Magic Valley Area Advertising Item |